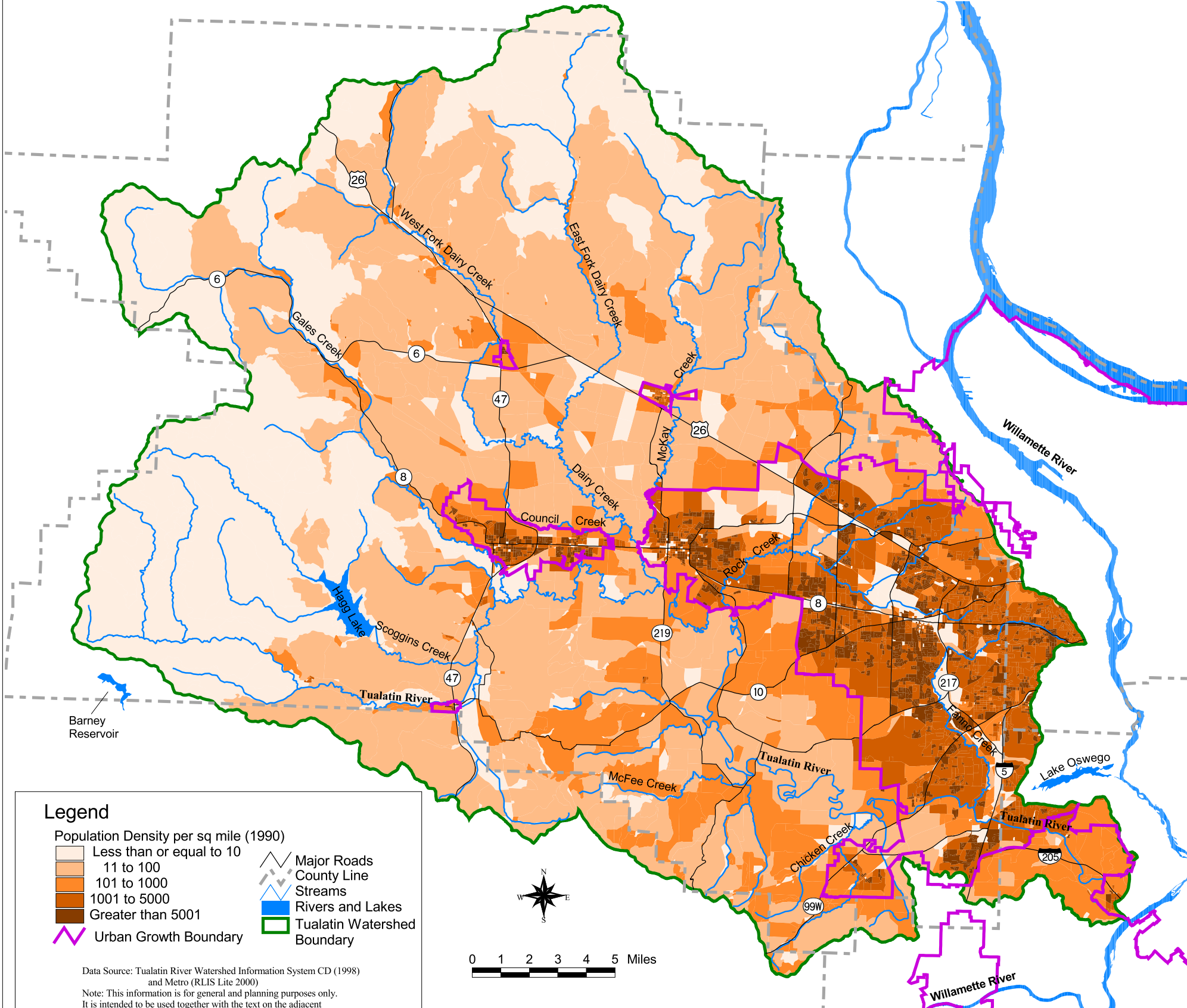


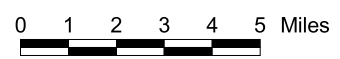
Population Density (1990)



Legend

- Population Density per sq mile (1990)
- Less than or equal to 10
 - 11 to 100
 - 101 to 1000
 - 1001 to 5000
 - Greater than 5001
- Major Roads
 - County Line
 - Streams
 - Rivers and Lakes
 - Tualatin Watershed Boundary
 - Urban Growth Boundary

Data Source: Tualatin River Watershed Information System CD (1998) and Metro (RLIS Lite 2000)
 Note: This information is for general and planning purposes only. It is intended to be used together with the text on the adjacent corresponding page in the Tualatin River Watershed Atlas.

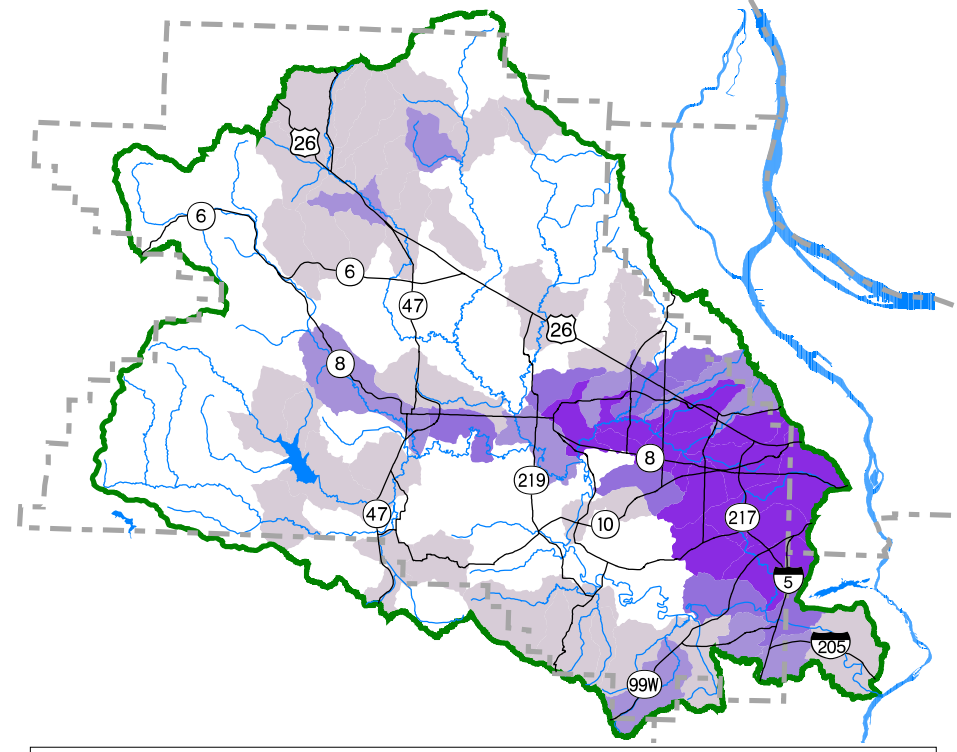


Tualatin River Watershed Population Density and Road Density

Tualatin River
Watershed Council
Atlas Project

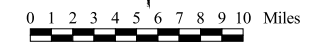


Road Density



Legend

- Miles of road per square mile
- Less than 4
 - 4.01 to 6
 - 6.01 to 10
 - 10.01 to 12.6
 - Greater than 12.6
- Major Roads
 - Streams
 - County Line
 - Major Rivers and Lakes



Data Source: Tualatin River Watershed Information System CD (1998)