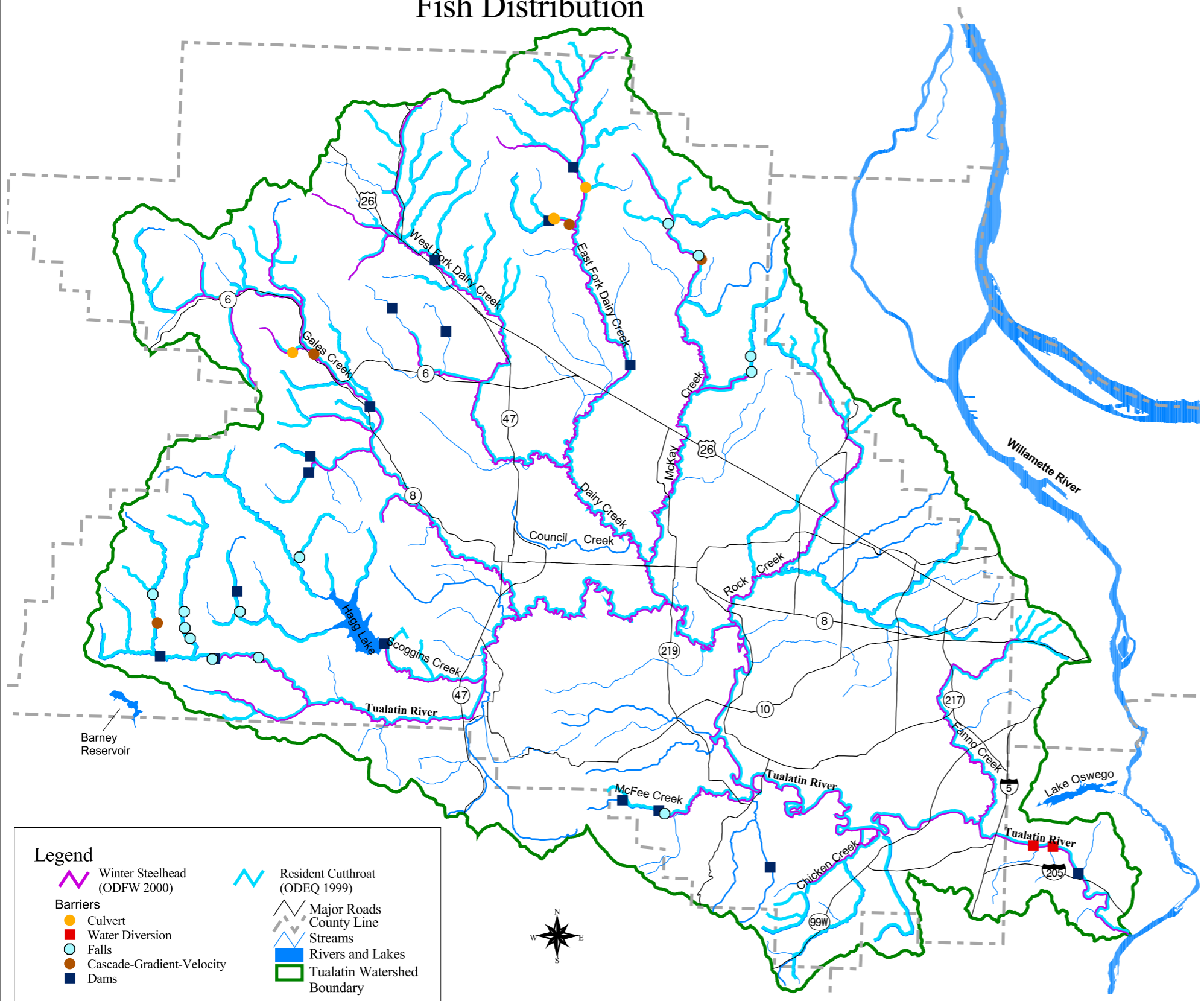


# Fish Distribution



- Legend**
- Winter Steelhead (ODFW 2000)
  - Resident Cutthroat (ODEQ 1999)
  - Barriers**
  - Culvert
  - Water Diversion
  - Falls
  - Cascade-Gradient-Velocity
  - Dams
  - Major Roads
  - County Line
  - Streams
  - Rivers and Lakes
  - Tualatin Watershed Boundary

Data Source: ODFW (1999 and 2000), ODEQ (1999), Tualatin River Watershed Information System CD (1998) and Metro (RLIS Lite 2000)

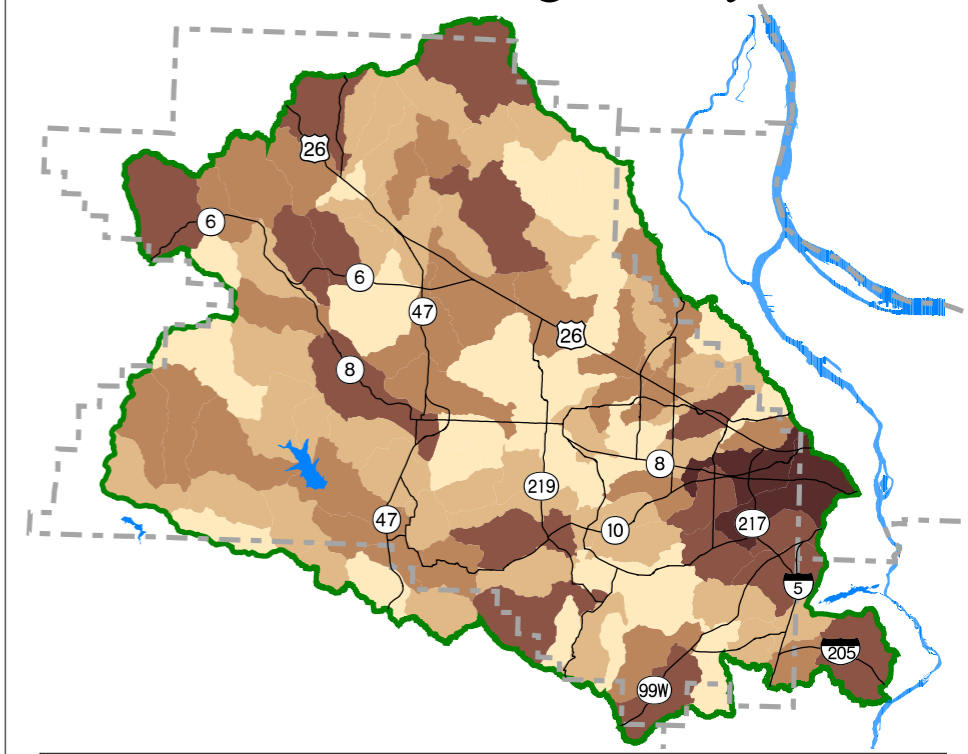
Note: This information is for general and planning purposes only. It is intended to be used together with the text on the adjacent corresponding page in the Tualatin River Watershed Atlas.

# Tualatin River Watershed Fish Distribution and Road Crossing Density

Tualatin River  
Watershed Council  
Atlas Project



## Road Crossing Density



- Legend**
- Number of Road Crossings
- Less than or equal to 12
  - 13 to 22
  - 23 to 36
  - 37 to 55
  - 56 to 133
- Major Roads
  - Streams
  - County Line
  - Major Rivers and Lakes

Data Source: Tualatin River Watershed Information System CD (1998)