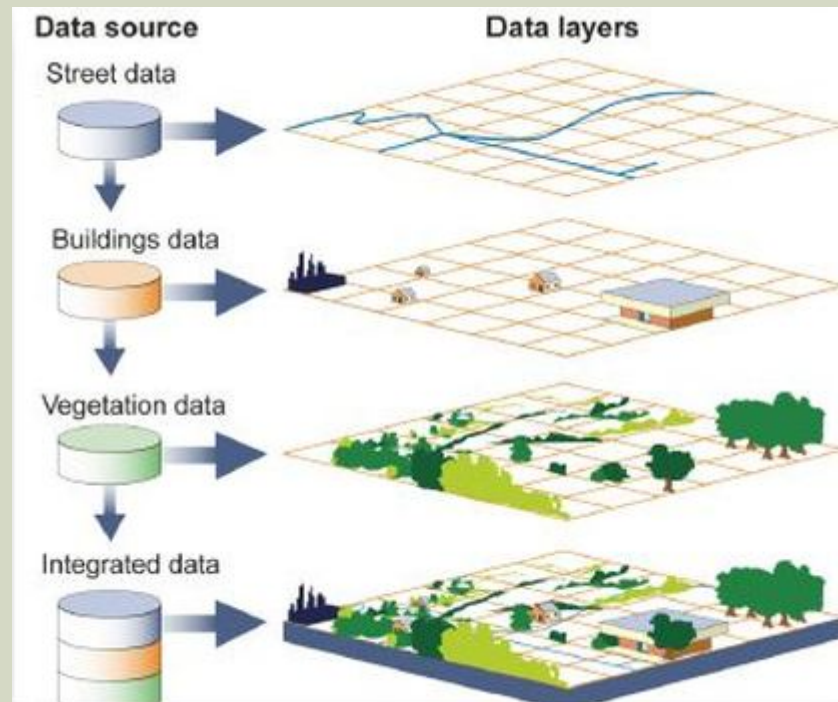


MAPPING THE 2013 AND 2014 FISH SURVEYS



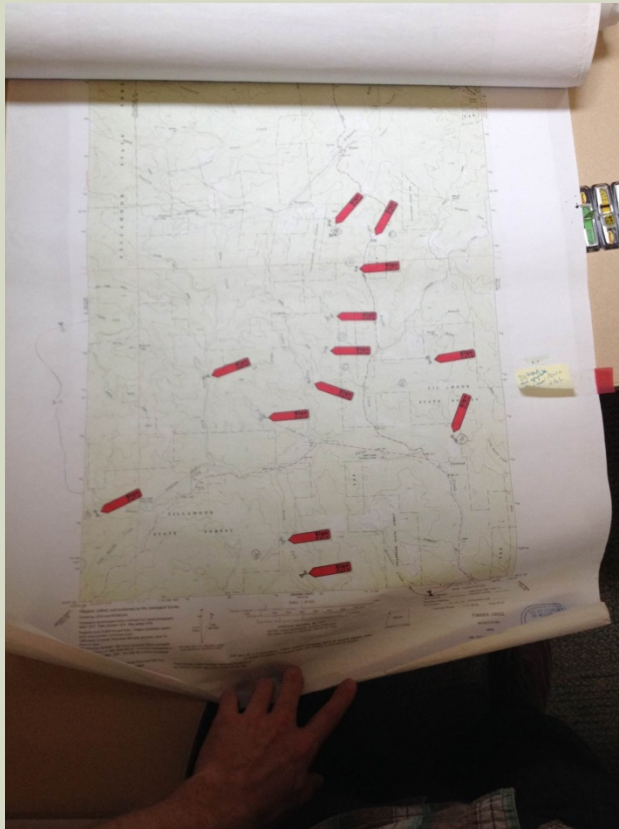
WHY SHOULD I CARE?

- Allows you to view the data spatially, query the data, and perform analysis.



THE DATA COLLECTION PROCESS

- 2013: Access database and quadrangle maps.

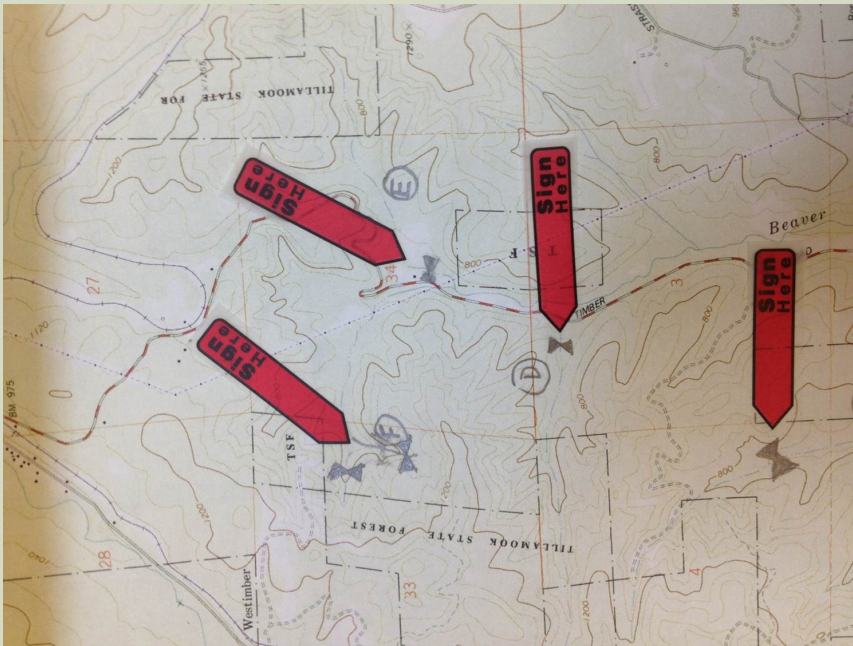


- 2014: Access database and GPS points.

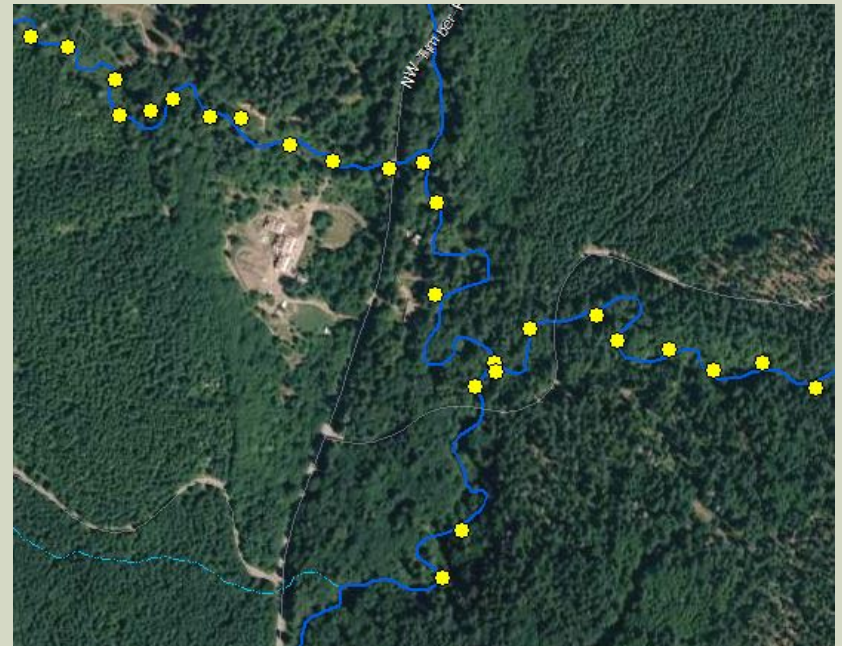


MAPPING THE DATA

- 2013: Digitize stream pools and use those to locate non-digitized pools.

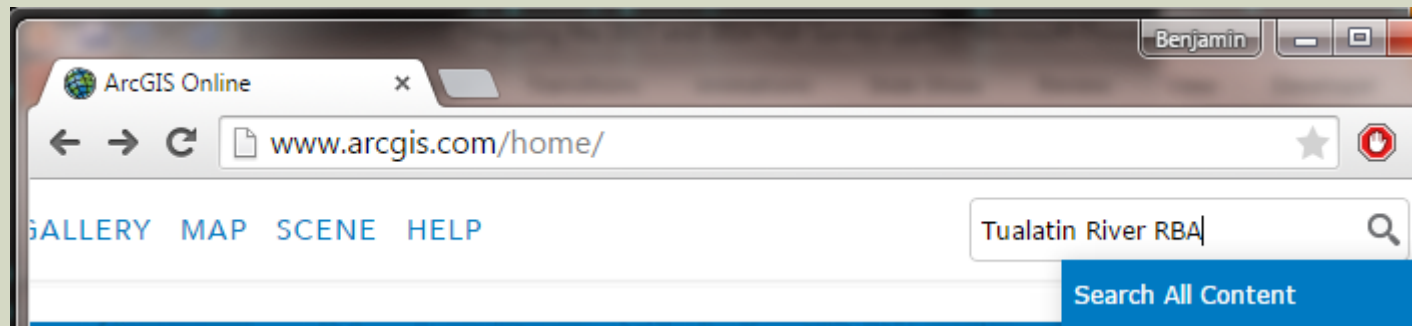


- 2014: Import GPS points and use those to place the few remaining pools.



THE FINAL PRODUCT

- Available online via ArcGIS.com and at trwc.org (soon).



	Relevance	Title	Owner	Rating	Views	Date
		2013 Tualatin River Rapid Bio-Assessment				
		2013 Tualatin River Rapid Bio-Assessment				
		 Web Map by shepardb				
		Last Modified: April 16, 2015				
		★★★★★ (1 rating, 0 comments, 103 views)				
Open ▾		Details				

ArcGIS - 2013 Tualatin River Rapid Bio-Assessment

Details

Basemap

Share

Print

Measure

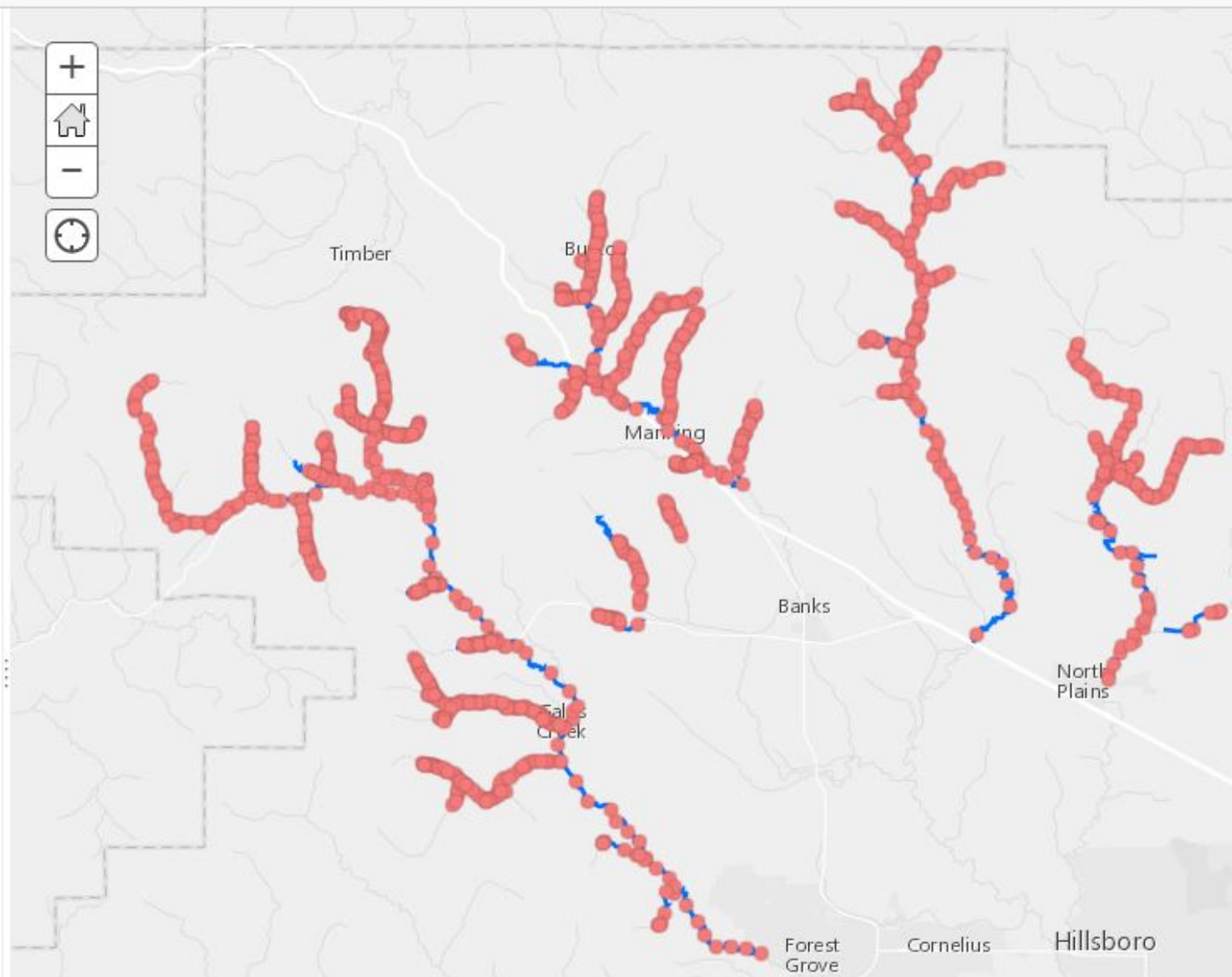
Place or Address

Legend

Surveyed Pools



Surveyed Streams



Map navigation controls: + (Zoom In), Home, - (Zoom Out), and a circular arrow (Refresh).

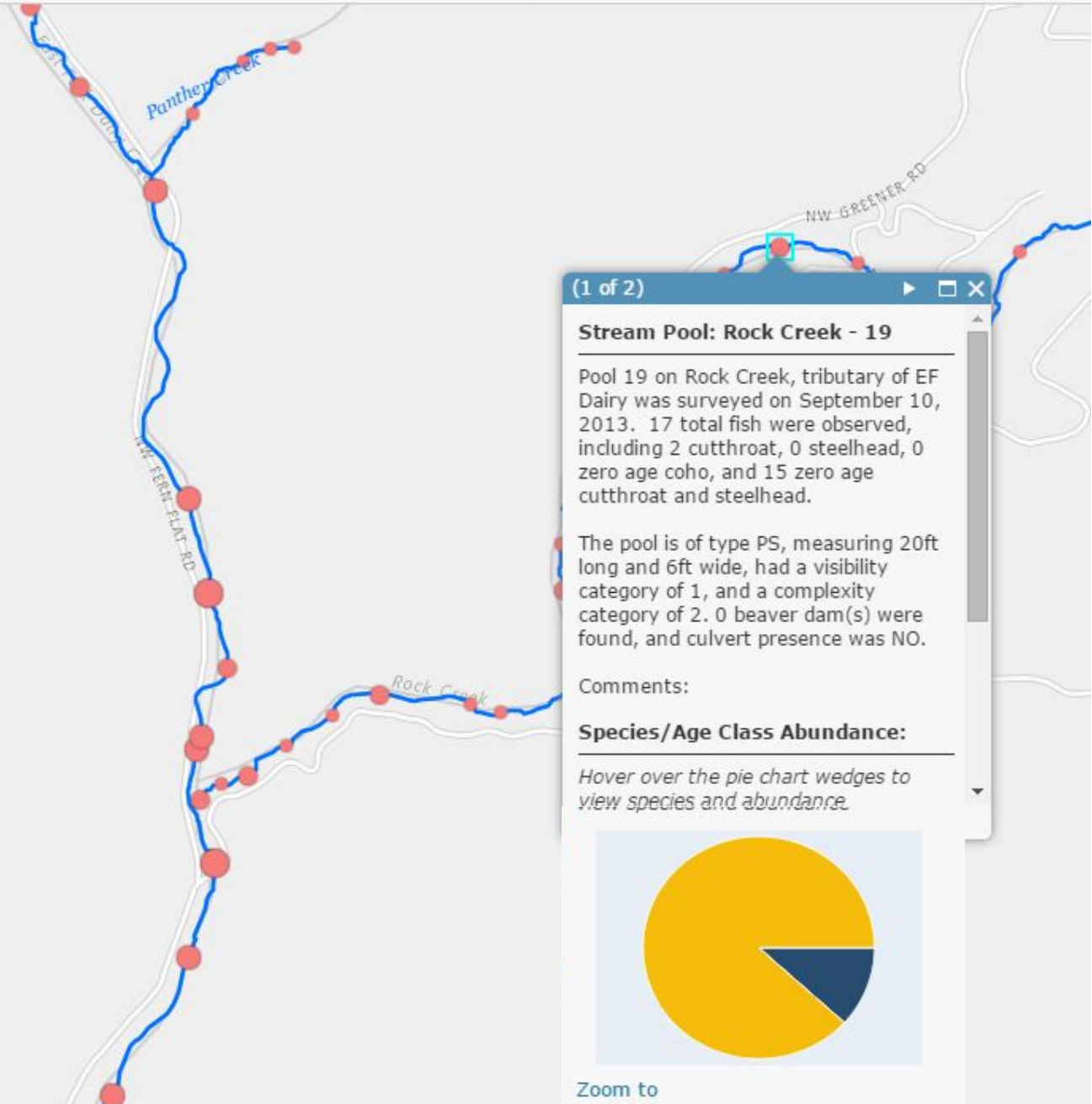


Contents

- Surveyed Pools
- Surveyed Pools - Total Fish Present
- Surveyed Streams
- Surveyed Streams - Labeled

Light Gray Canvas

- Zoom to
- Transparency
- Change Style**
- Show Table
- Filter
- Show Item Details



(1 of 2)

Stream Pool: Rock Creek - 19

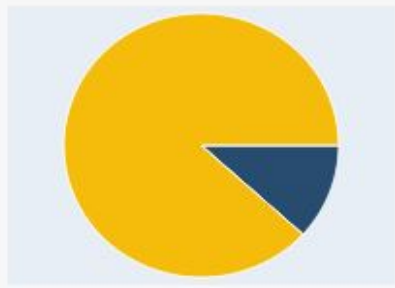
Pool 19 on Rock Creek, tributary of EF Dairy was surveyed on September 10, 2013. 17 total fish were observed, including 2 cutthroat, 0 steelhead, 0 zero age coho, and 15 zero age cutthroat and steelhead.

The pool is of type PS, measuring 20ft long and 6ft wide, had a visibility category of 1, and a complexity category of 2. 0 beaver dam(s) were found, and culvert presence was NO.

Comments:

Species/Age Class Abundance:

Hover over the pie chart wedges to view species and abundance.



Zoom to

Change Style

Surveyed Pools - Total Fish Present

1

Choose an attribute to show

Total Fish

2

Select a drawing style

Heat Map

OPTIONS

Counts and Amounts (Color)

SELECT

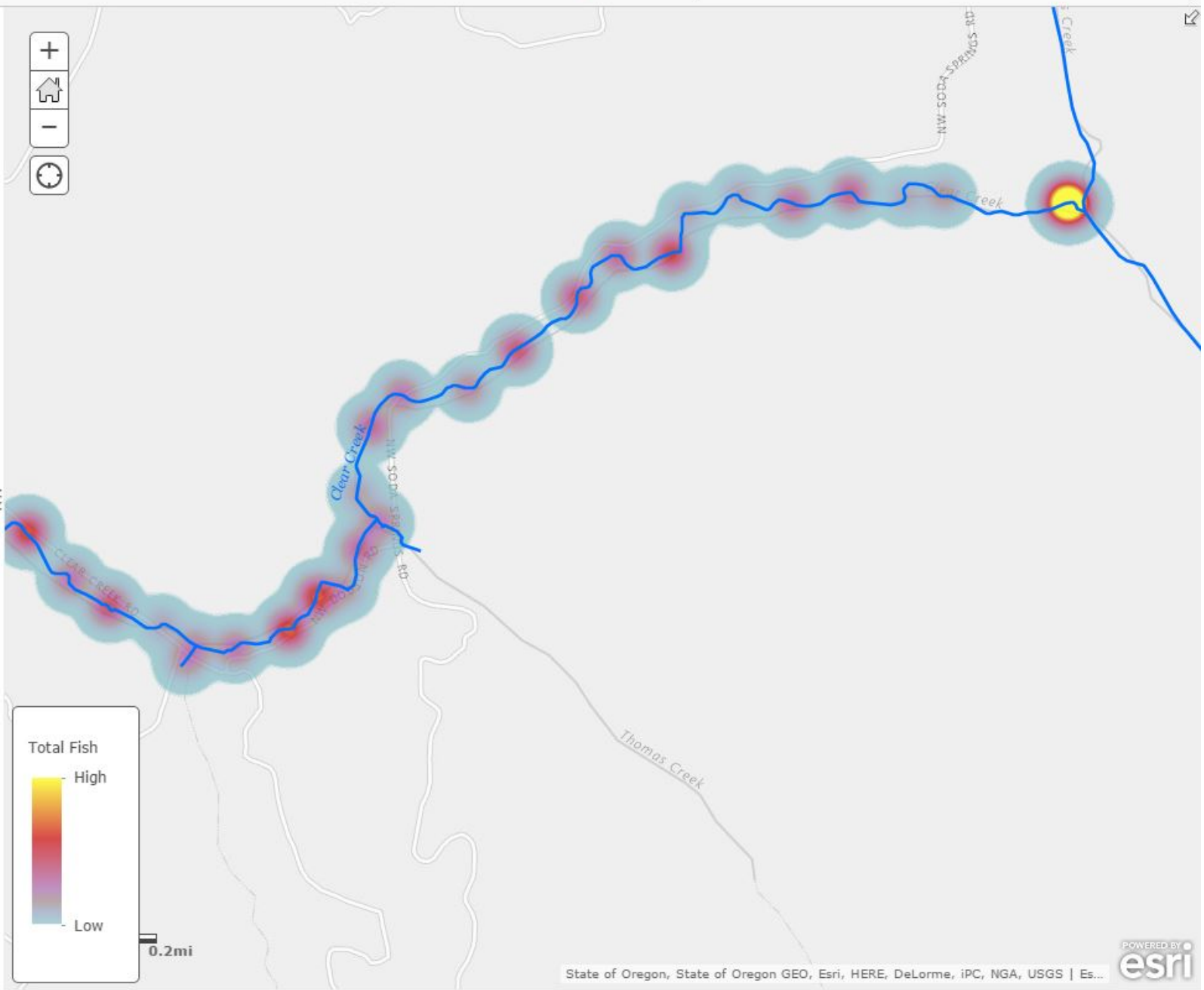
Counts and Amounts (Size)

SELECT

Location (Single symbol)

SELECT

DONE CANCEL



Change Style

Surveyed Pools - Total Fish Present

1

Choose an attribute to show

Total Fish

2

Select a drawing style

Heat Map

Counts and Amounts (Color)

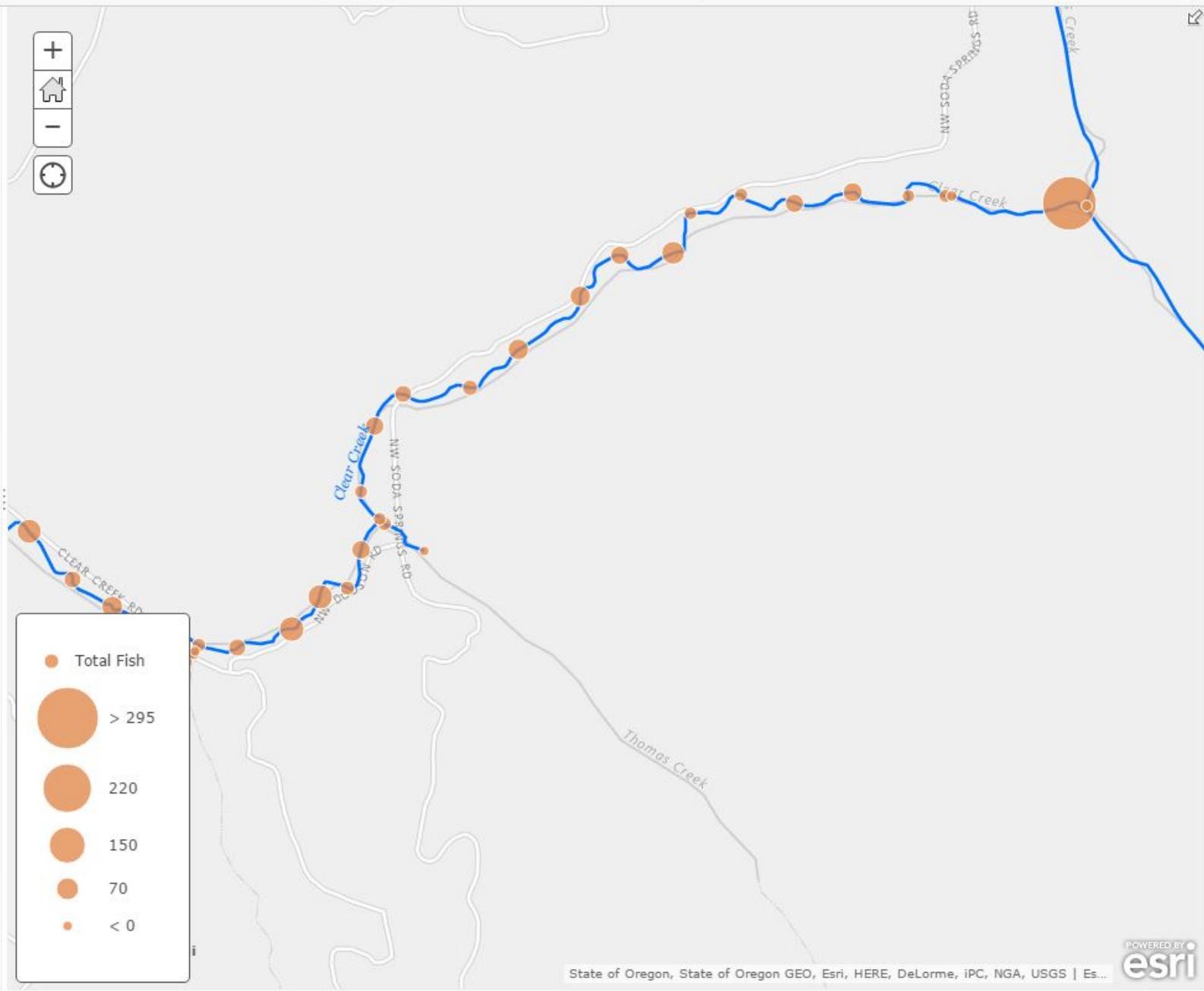
Counts and Amounts (Size)

Location (Single symbol)



Legend for Total Fish:

- Total Fish
- > 295
- 220
- 150
- 70
- < 0

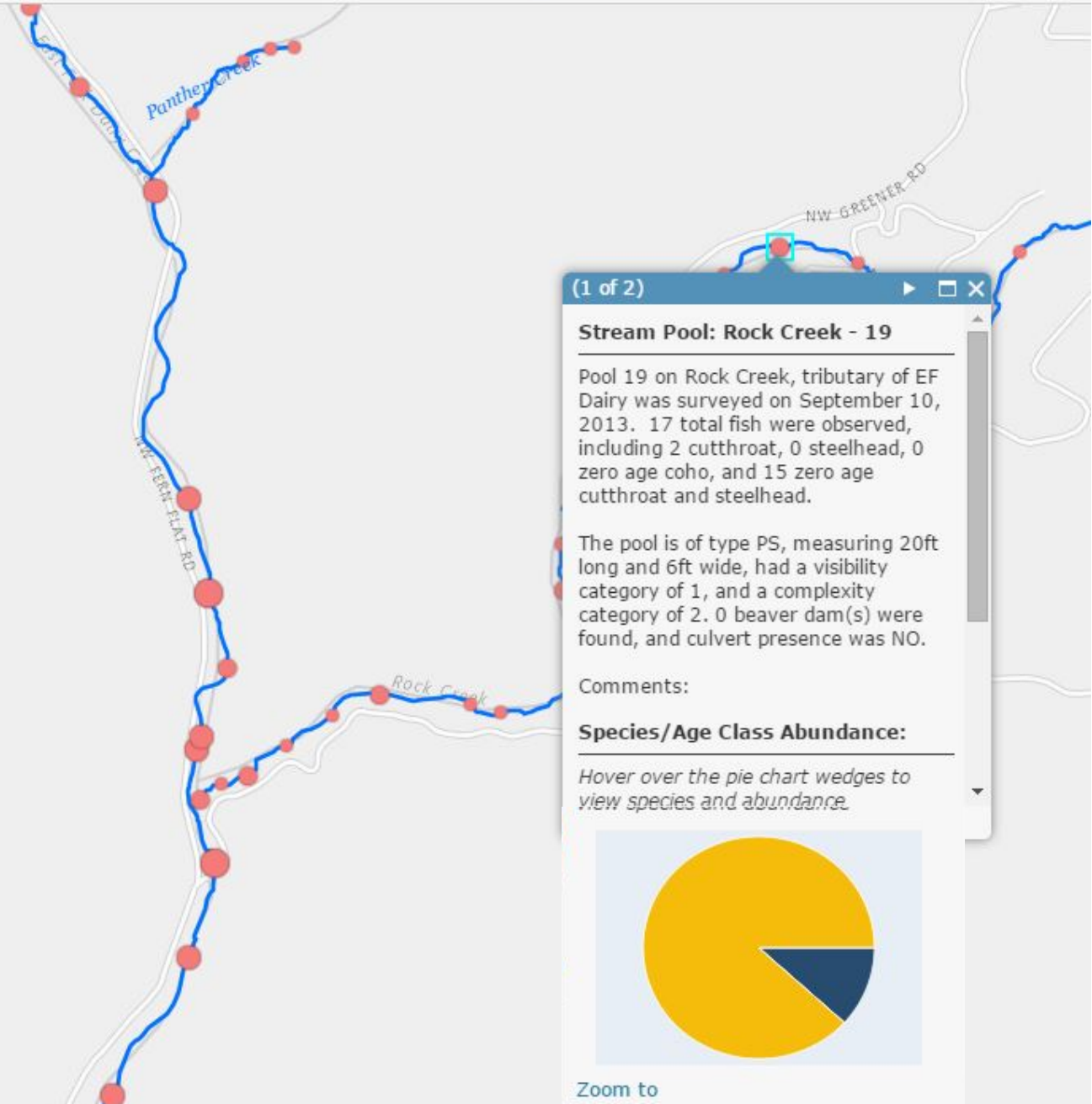




Contents

- Surveyed Pools
- Surveyed Pools - Total Fish Present
- Surveyed Streams
- Surveyed Streams - Labeled
- Light Gray Canvas

- Zoom to
- Transparency
- Change Style
- Show Table
- Filter
- Show Item Details



(1 of 2)

Stream Pool: Rock Creek - 19

Pool 19 on Rock Creek, tributary of EF Dairy was surveyed on September 10, 2013. 17 total fish were observed, including 2 cutthroat, 0 steelhead, 0 zero age coho, and 15 zero age cutthroat and steelhead.

The pool is of type PS, measuring 20ft long and 6ft wide, had a visibility category of 1, and a complexity category of 2. 0 beaver dam(s) were found, and culvert presence was NO.

Comments:

Species/Age Class Abundance:

Hover over the pie chart wedges to view species and abundance.



Zoom to

Details

Basemap

Share

Print

Measure

Place or Address

Contents

- Surveved Pools
- Surveved Pools - Total Fish Present
- Surveved Streams
- Surveved Streams - Labeled
- Light Gray Canvas

Map navigation controls: zoom in (+), home, zoom out (-), and refresh.

Filter: Surveved Pools

Create

+ Add another expression Add a set

Display features in the layer that match the following expression

Stream Name is East Fork Dairy Creek

Value Field Unique

Ask for values

APPLY FILTER

APPLY FILTER AND ZOOM TO

CLOSE

Details

Basemap

Share


Print

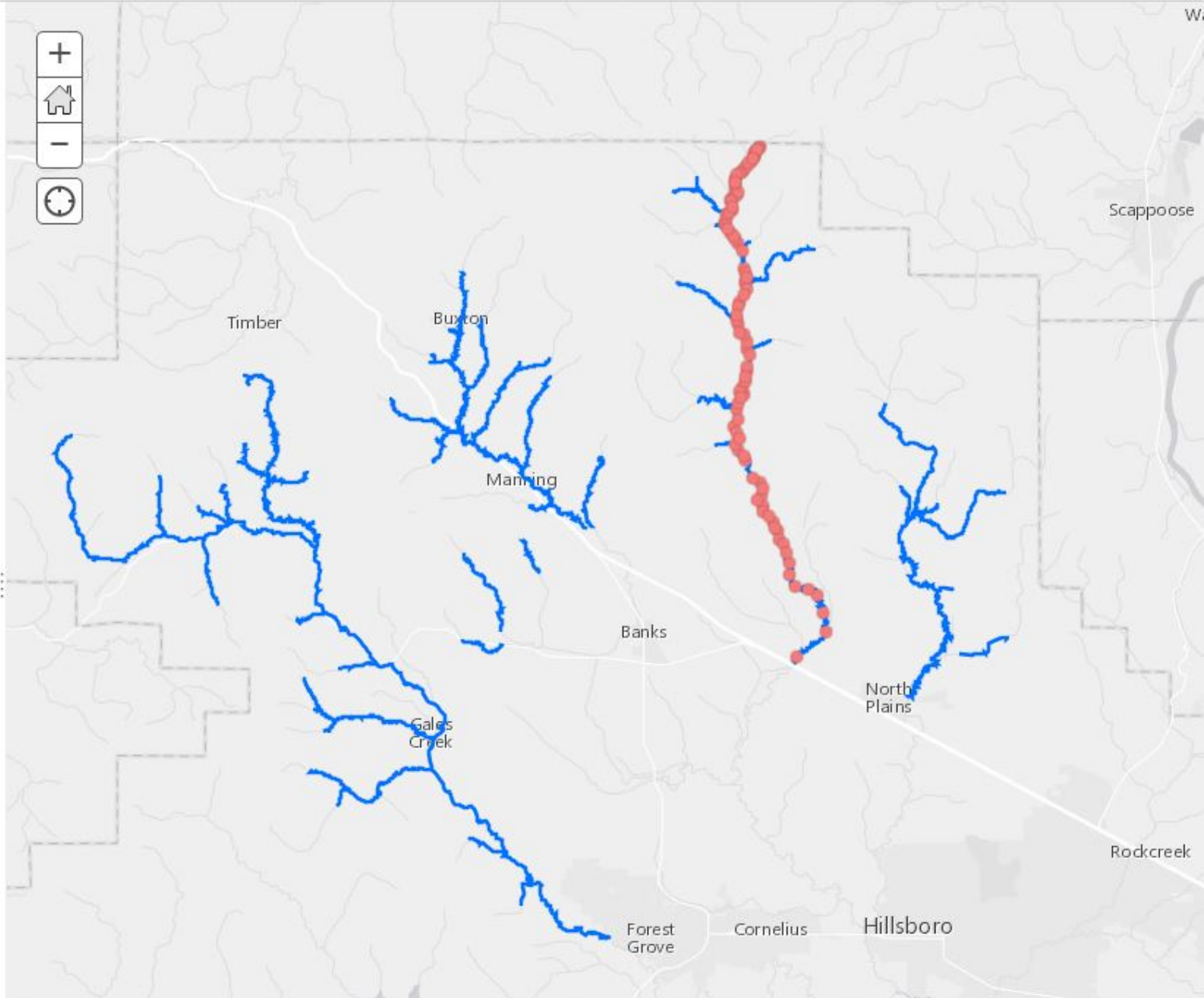
Measure

Place or Address



Contents

- Surveved Pools
- Surveved Pools - Total Fish Present
- Surveved Streams
- Surveved Streams - Labeled
- 
- Light Gray Canvas



SUMMARY

- How the data was mapped.
- How you can access the data.
- How you can interact with the data.

THANK YOU!

